

# ATTRACTION

**WSI** Refrigeration

REMOTE

SERVE OVER | SELF - SERVICE COUNTERS



RETAIL SYSTEM | PRODUCT



# ATTRACTION



## REFRIGERATED OR HEATED COUNTER

- Unified design with clean geometric lines
- Possibility of tailor made finishing - variety of materials and colours
- Integrated LED lighting - in colours adapted to products
- Front glass opening bottom up
- Available in curved glass version
- Evaporator at the back - empty base allows easy cleaning and better cold air circulation
- Stainless steel base - longer lifetime
- Wide range of accessories
- Available in self-service and hot section versions

**ATTRACTION** has a large selection of configurations, which ensure that counter can satisfy even the highest demands. Serve over or self-service ATTRACTION counters are designed with high quality front glass opening bottom up. All glass surfaces are easy to clean and maintain. Vertical evaporator position at the back of the counter allows **easy cleaning of the base tank.**

ATTRACTION is suitable for displaying hot and cold deli, meat, pastry and much more. Possibility of wide range of accessories and modern flat or curved glass design with maximal transparency, leading to excellent product visibility and enhanced merchandising.

Advanced controllers for optimal operation, electronic expansion valve and electronic controlled fans, which ensure maximum energy efficiency and **low energy consumption**, makes ATTRACTION counter as best choice for every store. This counter is available in Plug&Play variant as well, suitable to any floor plan.

## CUSTOMIZATION

- Controller options (Danfoss, Carel, Dixell Wurm, Eliwell)
- Stainless steel bumper
- Flat or curved glass design
- Self-Service version
- Heated version (Hot sections or Bain-marie)
- Endwalls/Intermediate - panoramic, mirrored
- A variety of interior / exterior colour options

Accessories: scale and cutting board, knife holder, paper holder, stepped decks, glass dividers, etc.

**Temperature class**  
(refrigerated counter): M0 / M1 / M2

**Refrigerant:** R744 or HFC

**ATTRACTION Serve Over** and **Self-Service counters** have same design as semi-vertical cabinet **ATTRACTION SV** which makes **a harmonized and engaging refrigeration line.**

## STANDARD EQUIPMENT

- Interior display deck completely in stainless steel
- Canopy LED lightning (colour adapted to food group)
- Stainless steel working table

## ATTRACTION:

- High efficiency EC fans
- Electronic expansion valve

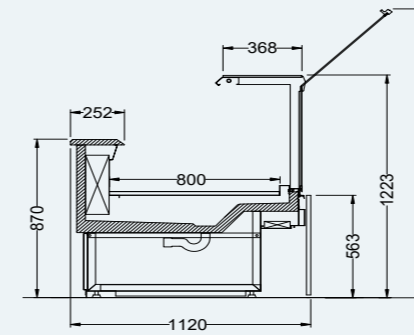
## ATTRACTION E:

- Thermal expansion valve

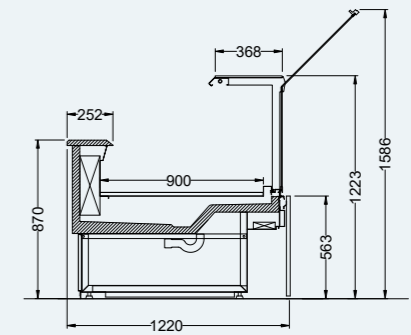


ATTRACTION Flat

ATTRACTION 112 Flat

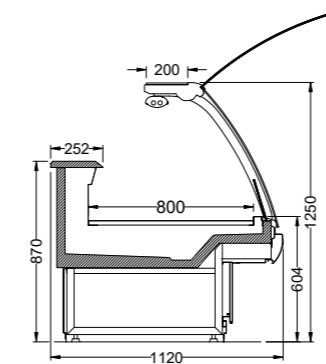


ATTRACTION 122 Flat

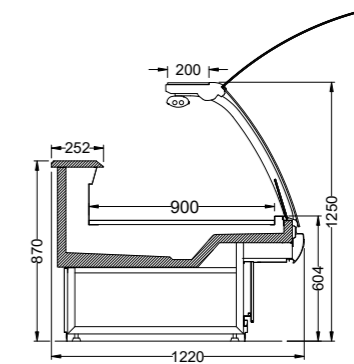


ATTRACTION Curved

ATTRACTION 112 Curved

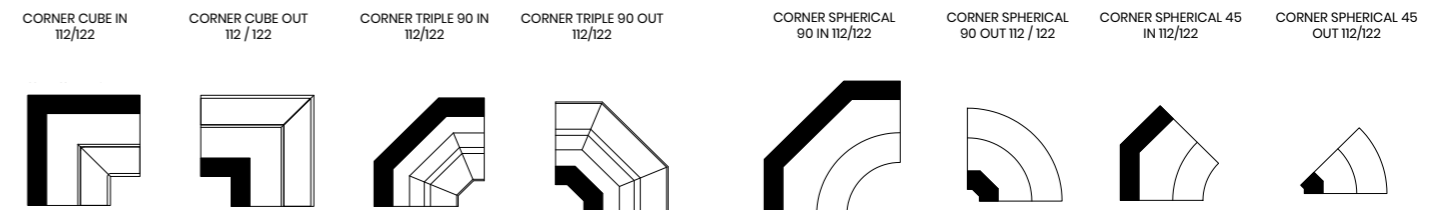


ATTRACTION 122 Curved



ATTRACTION Corners

ATTRACTION Corners 112 / 122



Design	Height (mm)	Vizual display (mm)	Depth (mm)	Lenght (mm)						Temperature class*			
				937	1250	1875	2500	3125	3750	H1	M0	M1	M2
Flat	1223	800	1120	✓	✓	✓	✓	✓	✓	X	X	✓	✓
		900	1220	✓	✓	✓	✓	✓	✓	X	X	✓	✓
Curved	1250	800	1120	✓	✓	✓	✓	✓	✓	X	X	✓	✓
		900	1220	✓	✓	✓	✓	✓	✓	X	X	✓	✓



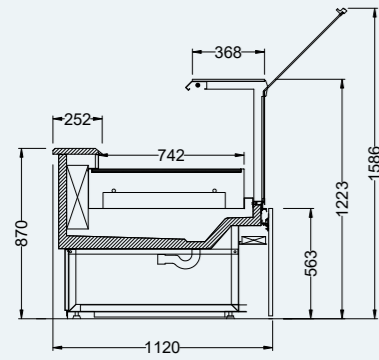
ATTRACTION Hot Plate



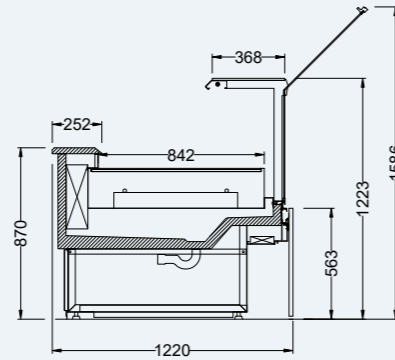
ATTRACTION Bain-marie



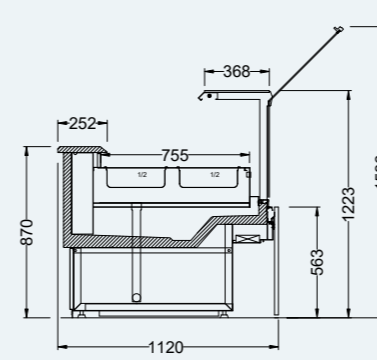
ATTRACTION 112 Flat Hot Plate



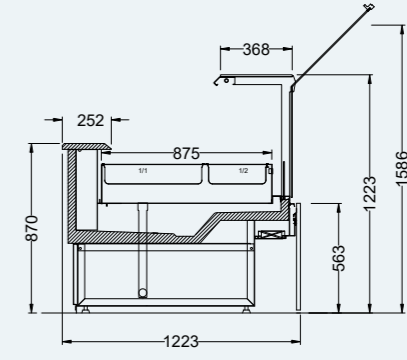
ATTRACTION 122 Flat Hot Plate



ATTRACTION 112 Flat Hot Bain-marie



ATTRACTION 122 Flat Hot Bain-marie



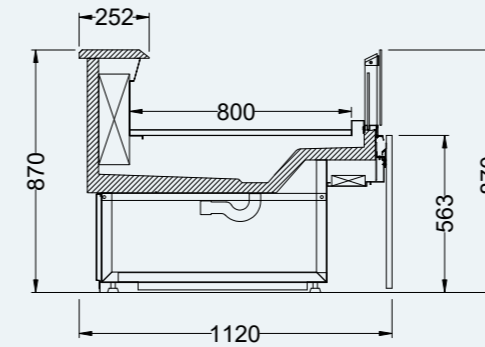
Design	Height (mm)	Vizual display (mm)	Depth (mm)	Lenght (mm)			Temperature class*
				937	1250	1875	Heated
Flat	1223	742	1120	✓	✓	✓	✓
		842	1220	✓	✓	✓	

Design	Height (mm)	Vizual display (mm)	Depth (mm)	Lenght (mm)			Temperature class*
				937	1250	1875	Heated
Flat	1250	755	1120	✓	✓	✓	✓
		875	1220	✓	✓	✓	

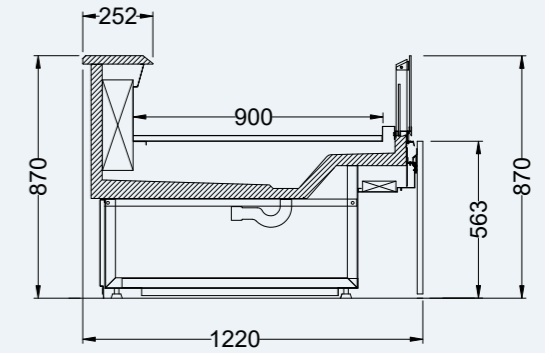


**ATTRACTION**  
Self - Service

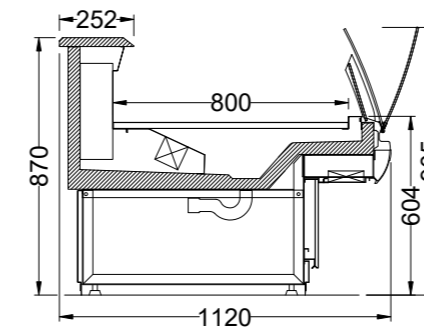
ATTRACTION 112 Flat Self



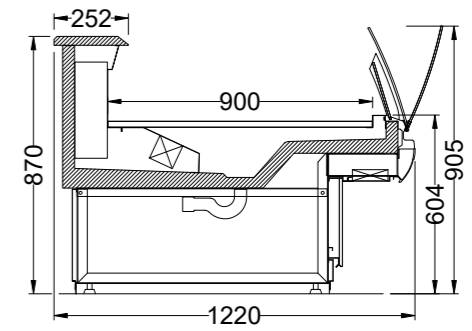
ATTRACTION 122 Flat Self



ATTRACTION 112 Curved Self



ATTRACTION 122 Curved Self



Design	Height (mm)	Vizual display (mm)	Depth (mm)	Lenght (mm)						Temperature class*	
				937	1250	1875	2500	3125	3750	M1	M2
Flat	870	800	1120	✓	✓	✓	✓	✓	✓	✓	✓
		900	1220	✓	✓	✓	✓	✓	✓		
Curved	905	800	1120	✓	✓	✓	✓	✓	✓	✓	✓
		900	1220	✓	✓	✓	✓	✓	✓		

# SV ATTRACTION SV



**ATTRACTION SV** is a half-height vertical cabinet that ensures perfect product visibility. **ATTRACTION SV** is equipped with wide-open display area with 1 to 3 stepped shelves depends of high of cabinet. The form of the cabinets provides an excellent functionality because of **perfect match with serve over line**.

Evaporator position in the back of the cabinet allows **easy cleaning of the base tank**.

The cabinet **ATTRACTION SV** has advanced controllers for optimal operation, electronic expansion valve and electronic controlled fans, which ensure maximum energy efficiency and **low energy consumption**.

**ATTRACTION SV** is cabinet with normal temperature and is suitable for the display and self-service sale of pre-

packed products such as sushi, meat, delicatessen, dairy products.

**Temperature class:** M1 / M2 / H1

**Refrigerant:** R744 or HFC

**ATTRACTION SV** cabinets have same design as **ATTRACTION** serve over counters, generating **a harmonized and engaging refrigeration line**.

#### STANDARD EQUIPMENT

- Manual night curtain
- Canopy LED lightning

#### ATTRACTION SV:

- High efficiency EC fans
- Electronic expansion valve

#### ATTRACTION SV E:

- Thermal expansion valve

#### CUSTOMIZATION

- Controller options (Danfoss, Carel, Dixell, Wurm, Eliwell)
- Number of shelves
- Horizontal or vertical LED lightning (colour adapted to food group)
- Complete stainless steel interior version
- WINE version
- ROLL-IN version (M1 / M2 / H1)
- Endwalls/Intermediate – blind, panoramic, mirrored
- A variety of interior / exterior colour options

Accessories: wine shelves, meat hangers, front risers, vertical and shelf dividers, shelf and base grids, etc.

#### HALF-HEIGHT CABINET

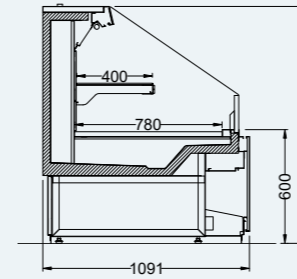
- Self-service counter, part of the Attraction serve over line – less workforce presence
- Possibility of tailor made finishing – materials and colours
- 3 height options – great product presentation
- Possibility of back to back configuration
- Stainless steel base – longer lifetime



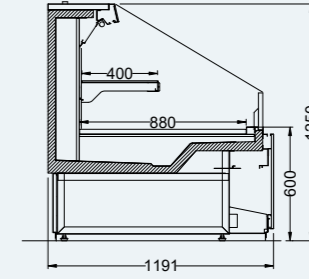


ATTRACTION SV 125

ATTRACTION SV 112 / 125

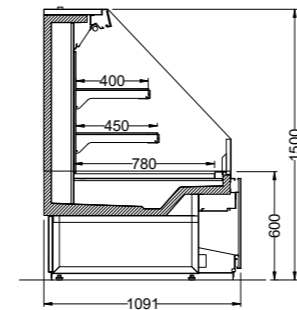


ATTRACTION SV 122 / 150

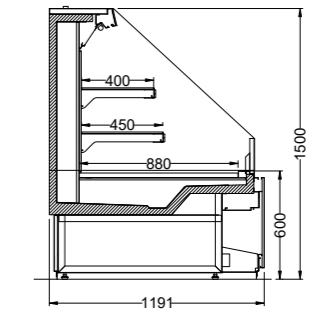


ATTRACTION SV 150

ATTRACTION SV 112 / 150

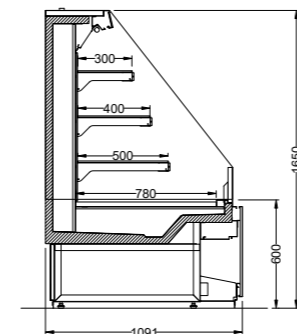


ATTRACTION SV 122 / 150

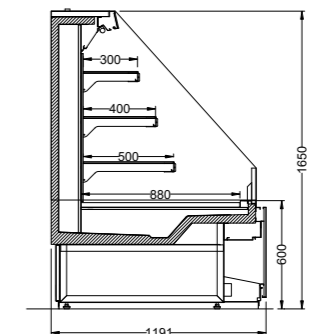


ATTRACTION SV 165

ATTRACTION SV 112 / 165



ATTRACTION SV 122 / 165



Design	Height (mm)	Vizual display (mm)	Depth (mm)	Shelf Depth (mm)	Lenght (mm)					Temperature class*	
					938	1250	1875	2500	3750	M1	M2
Flat	1250	780	112	400	✓	✓	✓	✓	✓	✓	✓
		880	122		✓	✓	✓	✓	✓		
	1500	780	112	400 - 450	✓	✓	✓	✓	✓	✓	✓
		880	122		✓	✓	✓	✓	✓		
	1650	780	112	300 - 500	✓	✓	✓	✓	✓	✓	✓
		880	122		✓	✓	✓	✓	✓		

ATTRACTION Pastry is a refrigerated counter designed for display of cold and hot pastry products, juices etc. It has large selection of configurations, which ensure that counter, can satisfy even the highest demands. Cabinet is designed for maximal transparency and perfect display area.

ATTRACTION Pastry counters are designed with high quality bottom tilting opening front glass for easier cleaning and maintenance and rear sliding doors for easy product fill.

- Unified design with clean geometric lines
- Possibility of tailor made finishing - variety of materials and colours
- Integrated LED lighting - in colours adapted to products
- Front glass opening bottom up
- Rear sliding doors for easy product fill
- 2 rows of glass shelves
- Available lengths 600mm, 1000mm, 1250mm, 1875mm, 2500mm

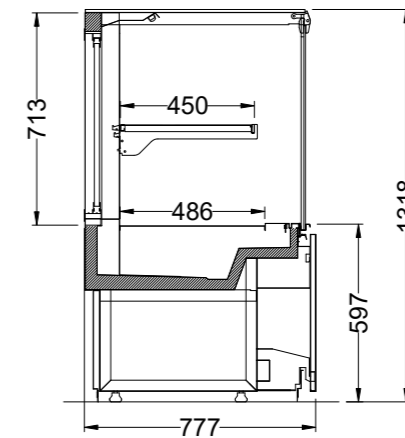


ATTRACTION Pastry

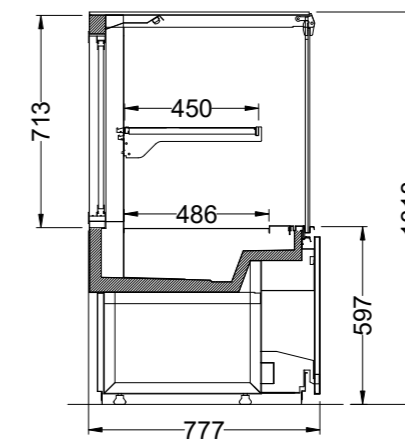


ATTRACTION Pastry Hot

ATTRACTION Pastry



ATTRACTION Pastry Hot



Design	Height (mm)	Vizual display (mm)	Depth (mm)	Lenght (mm)			Temperature class*	
				937	1250	1875	M1	M2
Flat	1318	721	777	✓	✓	✓	✓	✓