





# DESIRE P&P

**DESIRE P&P** is a plug-in refrigerated counter with condensation unit at the bottom of the counter, which is easily accessible. **DESIRE P&P** is elegant and trendy and presents a perfect price-quality correlation. With flat or curved front glass, this counter offers excellent visibility of the presented products and optimum functional solutions with wide range of accessories and variable base decoration options. This counter is available as serve-over and self-service version and assisted sale with bottom tilting opening front glass.

With internal cooling under storage, this counter provides storage and ideal capacity utilization of product display area.

Due to implemented natural refrigerant R290 **DESIRE P&P** is operating quietly and leaves a smaller footprint on the environment.

**Temperature class**  
(refrigerated counter): M1 / M2

**Refrigerant:** R290

#### STANDARD EQUIPMENT

- Interior display deck completely in stainless steel
- Integrated LED lightning (colour adapted to food group)
- Stainless steel working table
- Refrigerated under storage
- High efficiency EC fans

#### CUSTOMIZATION

- Controller options (Danfoss, Carel, Dixell Wurm, Eliwell)
- Stainless steel bumper
- Flat or curved glass design
- Self-Service version
- Heated version (Hot sections or Bain-marie)
- Endwalls/Intermediate – panoramic, mirrored
- A variety of interior / exterior colour options

Accessories: scale and cutting board, knife holder, paper holder, stepped decks, glass dividers , etc.

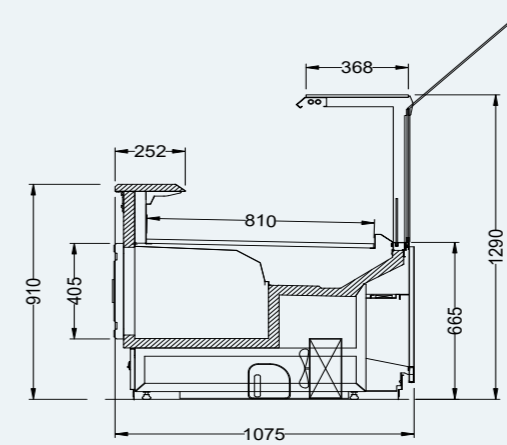
#### REFRIGERATED OR HEATED COUNTER

- Refrigerated under storage – suitable for small sized stores
- Unified design with clean geometric lines
- Possibility of tailor made finishing – variety of materials and colours
- Integrated LED lighting – in colours adapted to products
- Front glass opening bottom up
- Available in curved glass version
- Wide range of accessories
- Available in self-service and hot section versions



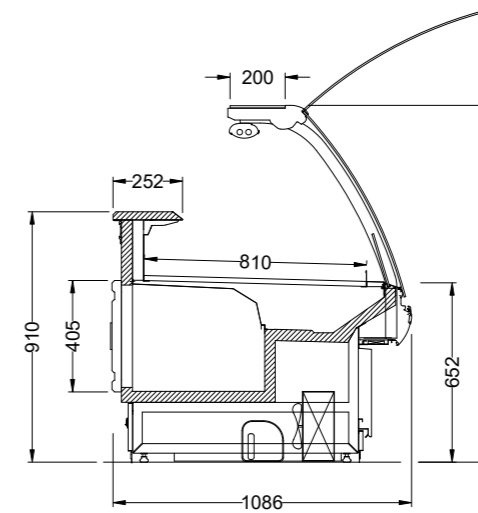
DESIRE P&P Flat

DESIRE Flat P&P



DESIRE P&P Curved

DESIRE Curved P&P



| Design | Height (mm) | Vizual display (mm) | Depth (mm) | Lenght (mm) |      |      |      |      |      | Temperature class* |    |
|--------|-------------|---------------------|------------|-------------|------|------|------|------|------|--------------------|----|
|        |             |                     |            | 937         | 1250 | 1875 | 2500 | 3125 | 3750 | M1                 | M2 |
| Flat   | 1290        | 810                 | 1075       | ✓           | ✓    | ✓    | ✓    | ✓    | ✓    | ✓                  | ✓  |
| Curved | 1297        | 810                 | 1086       | ✓           | ✓    | ✓    | ✓    | ✓    | ✓    | ✓                  | ✓  |

DESIRE P&P Self - Service

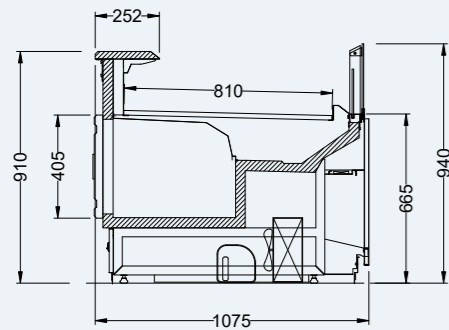


Refrigerated under storage:

- Extra cooling storage capacity integrated in cabinet
- High efficiency hinged doors
- Fast and easy counter refill
- Suitable for small sized stores

Refrigerated under storage

DESIRE Flat Self P&P



DESIRE Curved Self P&P

