

**DESIRE**

**WSI** Refrigeration

REMOTE

SERVE OVER | SELF - SERVICE COUNTERS



RETAIL SYSTEM | PRODUCT





# DESIRE

**DESIRE** counter has large selection of configurations, which ensure that counter can satisfy even the highest demands. **DESIRE** is elegant and trendy and presents a perfect price-quality correlation. It offers excellent visibility of the presented products and optimum functional solutions with wide range of accessories. This counter is available as a serve-over or **self-service version** and assisted sale with bottom tilting opening **front glass, flat or curved**.

**DESIRE** is a cooling counter with **internal cooling under storage** for ideal capacity utilization of product display area. It is suitable for displaying hot and cold deli, meat, pastry and much more.

**DESIRE** counter is available in plug&play variant as well, suitable to any floor plan.

**Temperature class**  
(refrigerated counter): M0 / M1 / M2

**Refrigerant:** R744 or HFC

#### STANDARD EQUIPMENT

- Interior display deck completely in stainless steel
- Canopy LED lightning (colour adapted to food group)
- Stainless steel working table
- Thermal expansion valve
- Refrigerated under storage

#### CUSTOMIZATION

- Controller options (Danfoss, Carel, Dixell Wurm, Eliwell)
- High efficiency EC fans
- Electronic expansion valve
- Stainless steel bumper
- Flat or curved glass design
- Self-Service version
- Heated version (Hot section or Bain-marie)
- Endwalls/Intermediate – panoramic, mirrored
- A variety of interior / exterior colour options

Accessories: scale and cutting board, knife holder, paper holders, stepped decks, glass dividers , etc.

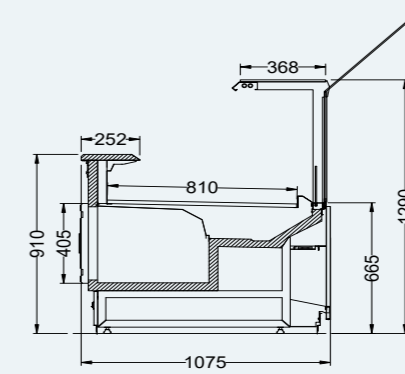
#### REFRIGERATED OR HEATED COUNTER

- **Refrigerated under storage** – suitable for small sized stores
- Unified design with clean geometric lines
- Possibility of tailor made finishing – variety of materials and colours
- Integrated LED lighting – in colours adapted to products
- Front glass opening bottom up
- Available in **curved glass version**
- Stainless steel base – longer lifetime
- Wide range of accessories
- Available in self-service and hot section versions



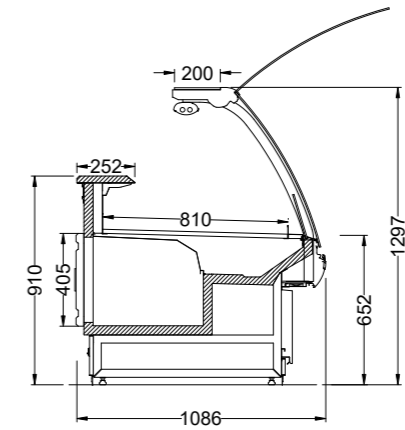
DESIRE Flat

DESIRE Flat



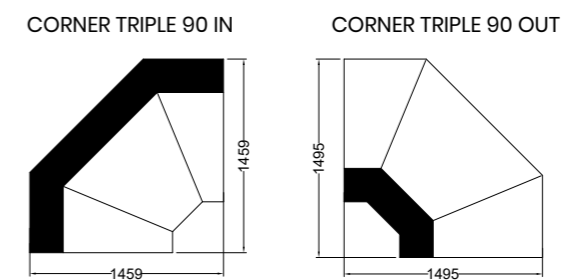
DESIRE Curved

DESIRE Curved



DESIRE Corners

DESIRE Corners



Design	Height (mm)	Vizual display (mm)	Depth (mm)	Lenght (mm)						Temperature class*	
				937	1250	1875	2500	3125	3750	M1	M2
Flat	1290	810	1075	✓	✓	✓	✓	✓	✓	✓	✓
Curved	1297	810	1086	✓	✓	✓	✓	✓	✓	✓	✓

**DESIRE Self - Service**

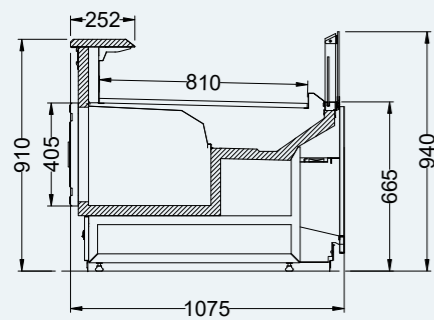


**Refrigerated under storage:**

- Extra cooling storage capacity integrated in cabinet
- High efficiency hinged doors
- Fast and easy counter refill
- Suitable for small sized stores

Refrigerated under storage

**DESIRE Flat Self**



**DESIRE Curved Self**

