



DEVOTION



REFRIGERATED OR HEATED COUNTER

- **Transparent frameless glass design** – total visibility of products
- Designed for high-end stores
- Possibility of tailor made finishing – materials and colours
- Entire glass structure opening at the top
- Evaporator at the back – empty base allows easy cleaning and better cold air circulation
- Stainless steel base – longer lifetime
- Wide range of accessories
- Available in self-service and hot section versions

DEVOTION refrigerated counter is most favourable solution for boutique shops. Its **premium design and elegant clear lines** attracts customers and enriches purchase experience.

With full glass superstructure without brackets and no frame, DEVOTION counters make a strong first impression. With modern flat glass design offers **maximal transparency and excellent product visibility** of carefully selected premium products. Full-front tilting opening enables easier cleaning and maintenance. Vertical evaporator position at the back of the counter allows easy cleaning of the base tank.

DEVOTION has advanced controllers for optimal operation, electronic expansion valve and electronic controlled fans, which ensure maximum energy efficiency and **low energy consumption**.

Temperature class

(refrigerated counter): M0 / M1 / M2

Refrigerant: R744 or HFC

STANDARD EQUIPMENT

- Interior display deck completely in stainless steel
- Stainless steel working table
- High efficiency EC fans
- Electronic expansion valve

CUSTOMIZATION

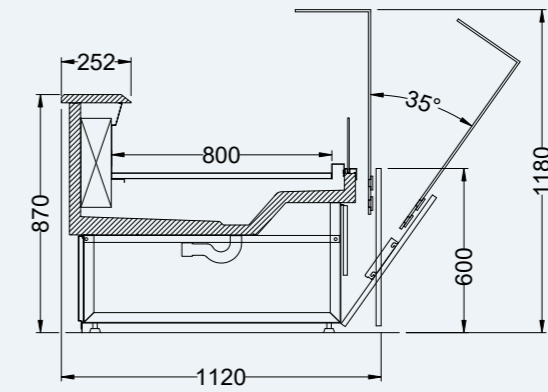
- Controller options (Danfoss, Carel, Dixell Wurm, Eliwell)
- Stainless steel bumper
- Self-Service version
- Endwalls/Intermediate – panoramic, mirrored
- A variety of interior / exterior colour options

Accessories: scale and cutting board, knife holder, paper holders, stepped decks, glass dividers , etc.

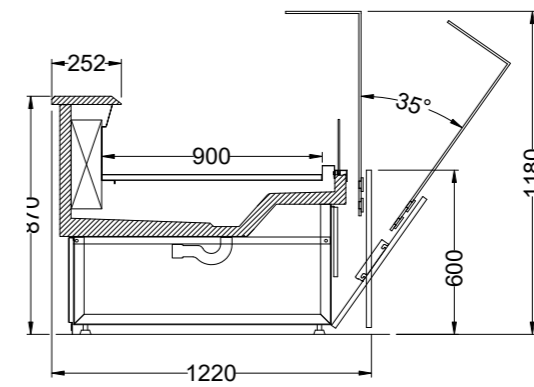


DEVOTION

DEVOTION 112



DEVOTION 122



Design	Height (mm)	Vizual display (mm)	Depth (mm)	Lenght (mm)					Temperature class*	
				938	1250	1875	2500	3750	M1	M2
Flat	1180	800	1120	✓	✓	✓	✓	✓	✓	✓
		900	1220	✓	✓	✓	✓	✓	✓	✓

Full front opening

- Full front opening
- Elegant and clean design
- Frameless glass structure
- Easy to clean



Full front opening



DEVOTION





WE BRING FRESHNESS TO YOUR STORE

WSI Refrigeration

**Germany / Austria /
Switzerland**

- 📍 Germany / Austria /
Switzerland
- ☎ +49 1525 54 29 168
- ✉ info.de@wsl-refrigeration.de

**Slovenia / BIH /
Montenegro**

- 📍 Sneberska cesta 111B
1260 Ljubljana-Polje
- ☎ +386 1 244 08 00
- ✉ info.si@wsl-refrigeration.com

Serbia

- 📍 Prva severna 8
22300 Stara Pozova
- ☎ +381 22 2155 701
- ✉ info.rs@wsl-refrigeration.com

Croatia

- 📍 Zagrebačka cesta 233
10000 Zagreb
- ☎ +385 1 3882 668
- ✉ info.hr@wsl-refrigeration.com

Greece

- 📍 Greece
- ☎ +30 6906 822402
- ✉ info.gr@wsl-refrigeration.com

West Europe

- 📍 West Europe
- ☎ +386 1 244 08 00
- ✉ info.si@wsl-refrigeration.com

Central and East Europe

- 📍 Central and East Europe
- ☎ +48 690 654 054
- ✉ info.cee@wsl-refrigeration.com

Balkan

- 📍 Balkan
- ☎ +381 64 64 10 439
- ✉ info.balkan@wsl-refrigeration.com

Middle East

- 📍 Middle East
- ☎ +381 64 64 41 850
- ✉ info.middleeast@wsl-refrigeration.com

America

- 📍 America
- ☎ +386 1 244 08 00
- ✉ info.si@wsl-refrigeration.com

Africa

- 📍 Africa
- ☎ +381 22 2155 701
- ✉ info.rs@wsl-refrigeration.com

Asia

- 📍 Asia
- ☎ +381 22 2155 701
- ✉ info.rs@wsl-refrigeration.com