



BAKERY CABINETS

# Bake off

WE BRING  
**FRESHNESS**  
TO YOUR STORE

# Bake off



**WE BRING  
FRESHNESS  
TO YOUR STORE**

*Fresh bread is often the reason for visiting the store. A rich selection of appealingly displayed bakery products is an additional incentive for impulse purchases.*

**Let your bakery department  
become the center of your store!**

*From our offer, you can choose from different types of bake off display cases, which ensure maximum transparency and optimal display of products that attract the attention of your customers.*

*Thanks to the modular design, the display cases can be integrated into each store and assembled into longer sets.*

*A wide range of wooden decors is available, which allows you to personalize the display case according to your wishes.*



# BOCS-16

1250x760x1900mm



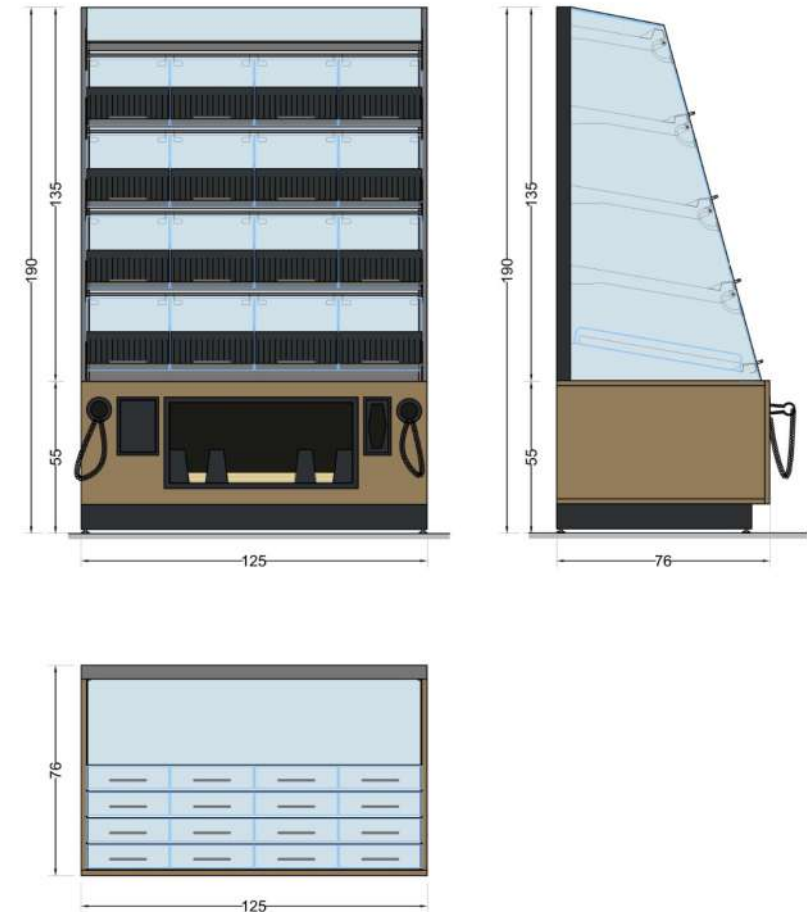
## Main features

### DISPLAY PART:

- 16 Glass Doors (slow closing)
- LED lighting on all shelves
- metal frame (RAL 9005)

### SERVICE PART:

- wooden base (different decors available)
- paper bags pocket
- trash can with swinging metal door
- protective gloves opening
- 2 gripper openings



# BOCS-12

950x760x1900mm



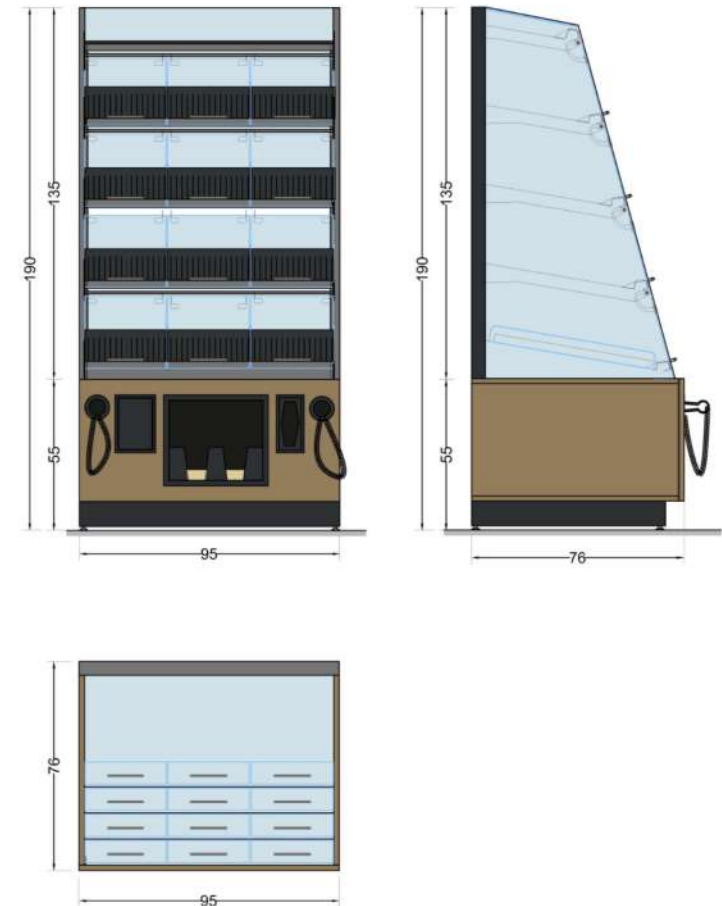
## Main features

### DISPLAY PART:

- 12 Glass Doors (slow closing)
- LED lighting on all shelves
- metal frame (RAL 9005)

### SERVICE PART:

- wooden base (different decors available)
- Paper bags pockets
- trash can with swinging metal door
- protective gloves opening
- 2 gripper openings



# BOCS-9

860x860x1800mm



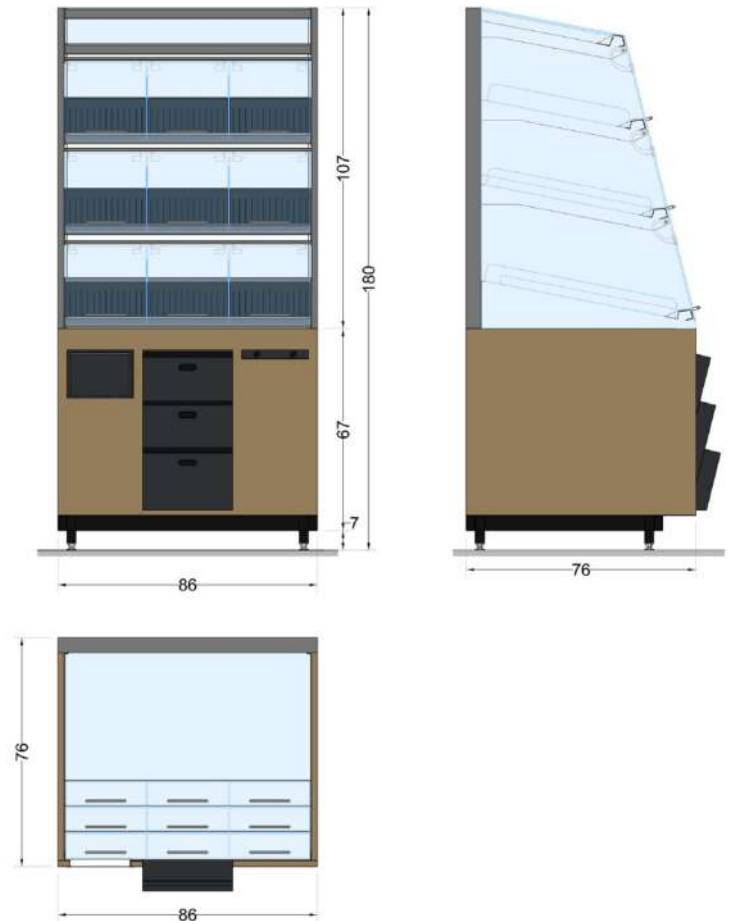
## Main features

### DISPLAY PART:

- 9 Glass Doors  
(slow closing)
- LED lighting on all shelves
- metal frame  
(RAL 9005)

### SERVICE PART:

- wooden base  
(different decors available)
- 3 Paper bags pockets
- trash can with swinging  
metal door
- protective gloves holder



# BOLD-9

860x990x1800mm



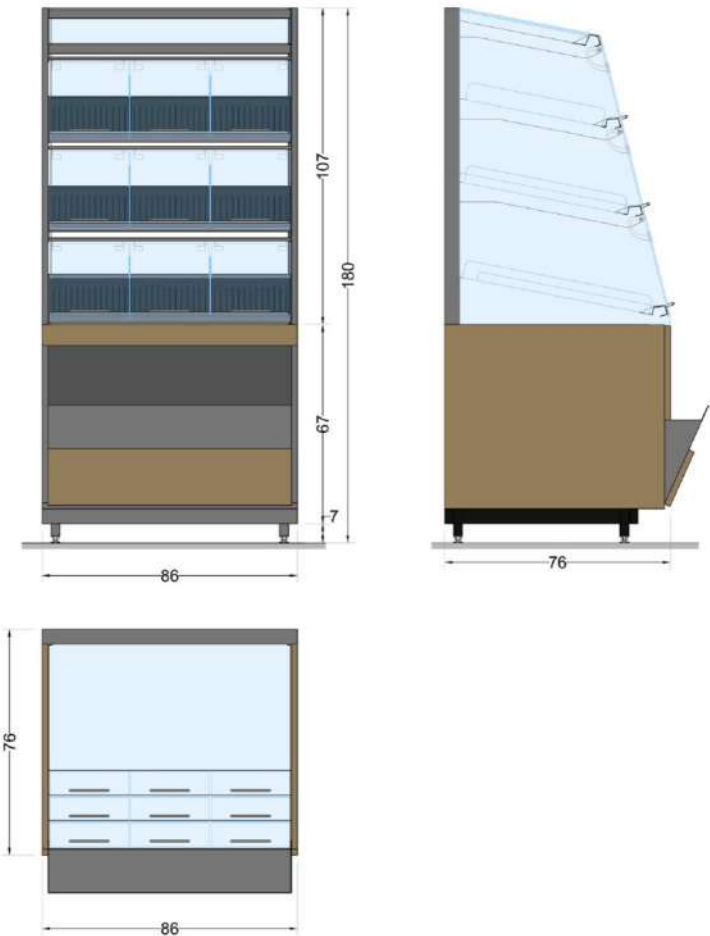
## Main features

### DISPLAY PART:

- 9 Glass Doors (slow closing)
- LED lighting on all shelves
- metal frame (RAL 9005)

### SERVICE PART:

- wooden base (different decors available)
- Packed bakery products compartment



# BOND-9

860x990x1800mm



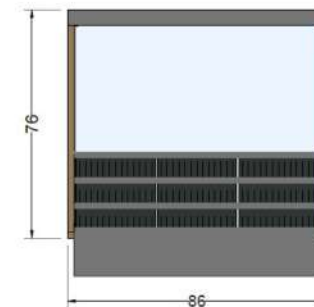
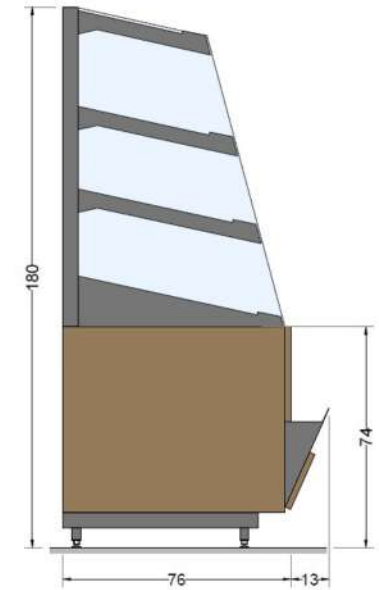
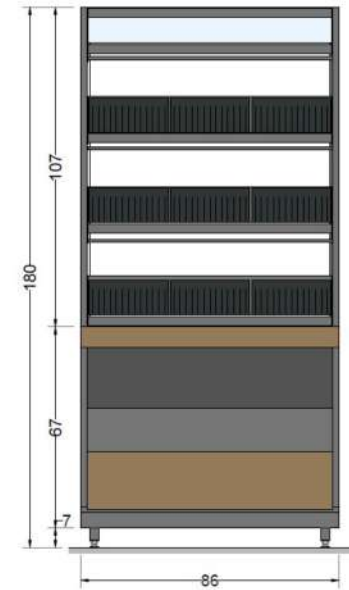
## Main features

### DISPLAY PART:

- 9 compartments (open)
- LED lighting on all shelves
- metal frame (RAL 9005)

### SERVICE PART:

- wooden base (different decors available)
- bottom part for packed bakery products



# BOCS

860x760x1800mm



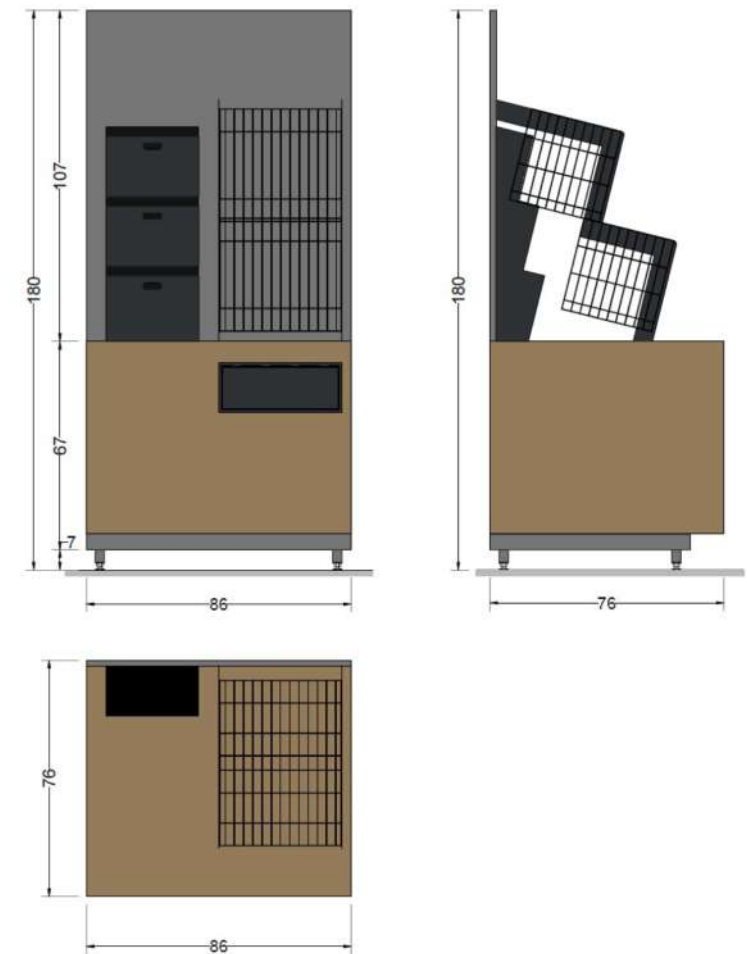
## Main features

### DISPLAY PART:

- wooden back panel (black)
- 2 wire baskets for baguettes
- 3 paper bags pockets

### SERVICEPART:

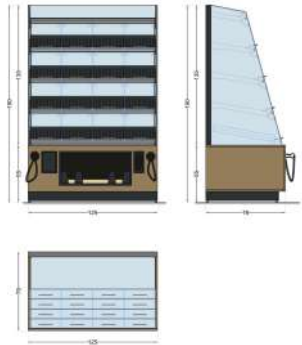
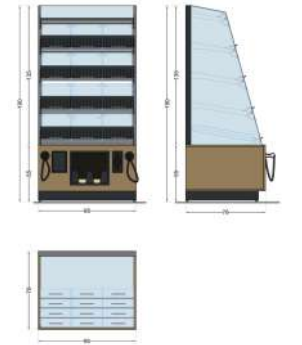
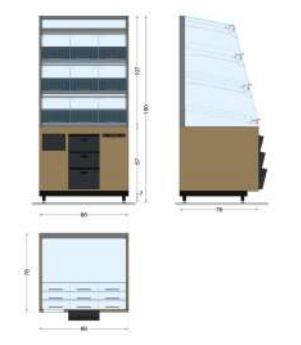
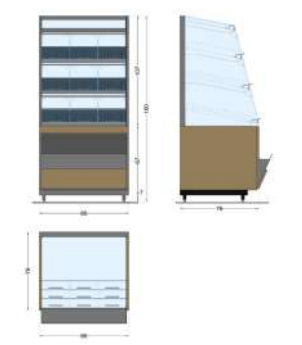
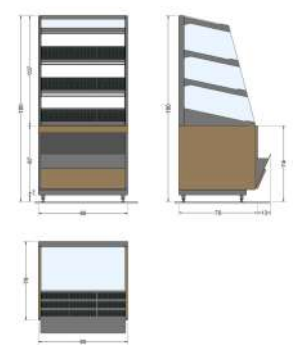
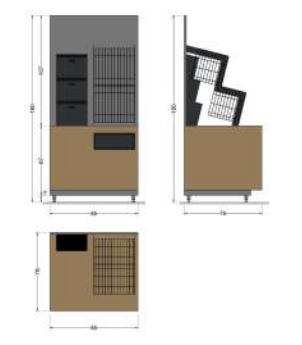
- wooden base (different decors available)
- trash can with swinging metal doors





# Collection

types

| TYPE        |                                                                                                                          |                                                                                                                          |                                                                                                                          |                                                                                                     |                                                                                                               |                                              |
|-------------|-----------------------------------------------------------------------------------------------------------------------------------------------------------------------------------------------------------|-----------------------------------------------------------------------------------------------------------------------------------------------------------------------------------------------------------|------------------------------------------------------------------------------------------------------------------------------------------------------------------------------------------------------------|----------------------------------------------------------------------------------------------------------------------------------------------------------------------------------------|--------------------------------------------------------------------------------------------------------------------------------------------------------------------------------------------------|---------------------------------------------------------------------------------------------------------------------------------|
| DISCRIPTION | <b>BOCS-16</b>                                                                                                                                                                                            | <b>BOCS-12</b>                                                                                                                                                                                            | <b>BOCS-9</b>                                                                                                                                                                                              | <b>BOLD-9</b>                                                                                                                                                                          | <b>BOND-9</b>                                                                                                                                                                                    | <b>BOCS</b>                                                                                                                     |
|             | 1250x760x1900                                                                                                                                                                                             | 950x760x1900                                                                                                                                                                                              | 860x860x1800                                                                                                                                                                                               | 860x990x1800                                                                                                                                                                           | 860x990x1800                                                                                                                                                                                     | 860x760x1800                                                                                                                    |
|             | Doors<br>16 trays / 16 articles<br>1 slot paper bags<br>1 glove holder<br>1 trash can<br>4 transparent bar for price<br>LED lightning on each shelf<br>2 item holders<br>combination painted metal / wood | Doors<br>12 trays / 12 articles<br>1 slot paper bags<br>1 glove holder<br>1 trash can<br>4 transparent bar for price<br>LED lightning on each shelf<br>2 item holders<br>combination painted metal / wood | Doors<br>9 trays / 9 articles<br>3 drawers for bags<br>1 glove holder<br>1 trash can<br>3 transparent bar for price<br>LED lightning on each shelf<br>2 item holders *<br>combination painted metal / wood | Doors<br>9 trays / 9 articles<br>1 drawer for self-service bread<br>3 transparent bar for price<br>LED lightning on each shelf<br>2 item holders *<br>combination painted metal / wood | Open (no doors)<br>9 trays / 9 articles<br>1 drawer for self-service bread<br>3 transparent bar for price<br>LED lightning on each shelf<br>2 item holders *<br>combination painted metal / wood | Open (no doors)<br>3 drawers for bags<br>2 wire baskets for french baguettes<br>1 trash can<br>combination painted metal / wood |

LEGEND:  
 \* optional as an accessories



## Germany / Austria / Switzerland

 Germany / Austria / Switzerland  
 +49 1525 54 29 168  
 [info.de@wsl-refrigeration.de](mailto:info.de@wsl-refrigeration.de)

## Slovenia / BIH / Montenegro

 Sneberska cesta 111B  
1260 Ljubljana-Polje  
 +386 1 244 08 00  
 [info.si@wsl-refrigeration.com](mailto:info.si@wsl-refrigeration.com)

## Serbia

 Prva severna 8  
22300 Stara Pozova  
 +381 22 2155 701  
 [info.rs@wsl-refrigeration.com](mailto:info.rs@wsl-refrigeration.com)

## Croatia

 Zagrebačka cesta 233  
10000 Zagreb  
 +385 1 3882 668  
 [info.hr@wsl-refrigeration.com](mailto:info.hr@wsl-refrigeration.com)

## Greece

 Greece  
 +30 6906 822402  
 [info.gr@wsl-refrigeration.com](mailto:info.gr@wsl-refrigeration.com)

## West Europe

 West Europe  
 +386 1 244 08 00  
 [info.si@wsl-refrigeration.com](mailto:info.si@wsl-refrigeration.com)

## Central and East Europe

 Central and East Europe  
 +48 690 654 054  
 [info.cee@wsl-refrigeration.com](mailto:info.cee@wsl-refrigeration.com)

## Balkan

 Balkan  
 +381 64 64 10 439  
 [info.balkan@wsl-refrigeration.com](mailto:info.balkan@wsl-refrigeration.com)

## Middle East

 Middle East  
 +381 64 64 41 850  
 [info.middleeast@wsl-refrigeration.com](mailto:info.middleeast@wsl-refrigeration.com)

## America

 America  
 +386 1 244 08 00  
 [info.si@wsl-refrigeration.com](mailto:info.si@wsl-refrigeration.com)

## Africa

 Africa  
 +381 22 2155 701  
 [info.rs@wsl-refrigeration.com](mailto:info.rs@wsl-refrigeration.com)

## Asia

 Asia  
 +381 22 2155 701  
 [info.rs@wsl-refrigeration.com](mailto:info.rs@wsl-refrigeration.com)